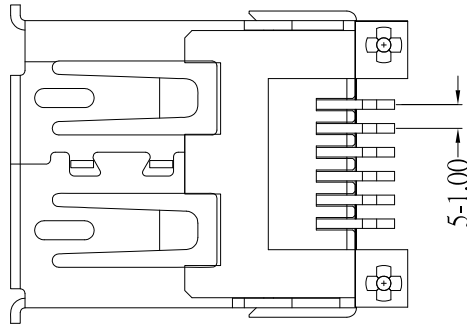
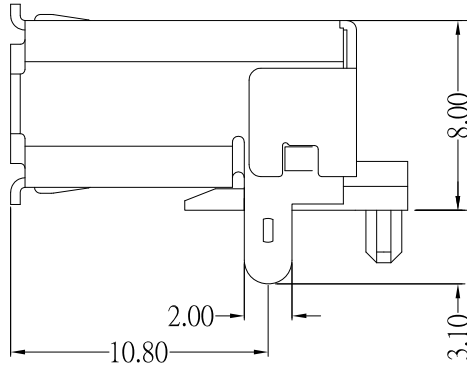
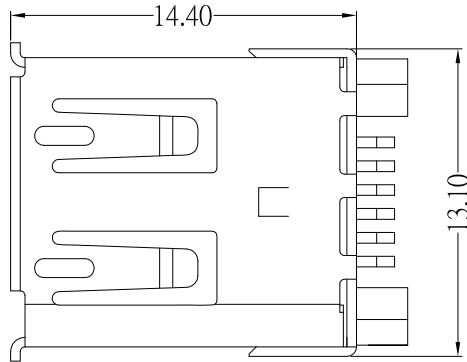


P.C.B LAYOUT MOUNTING PATTERN



SPECIFICATIONS

Electrical:

- 1.Current Rating: 1.0A / contact terminal
- 2.Voltage Rating: 30V DC
- 3.Contact Resistance: 50 milliohms Max
- 4.Dielectric Withstanding Voltage: 300 V AC AT Sec Level
- 5.Insulation Resistance: 100 MEGA ohms Min

Mechanical:

- 1.Connector Mate and Unmate Force
Mate force: 3.0 kgf (Max)
Unmate force: 0.7 kgf (Min)
- 2.Terminal Retention: 0.5 kgf (Min)

Material:

- 1.Housing: High Temperature Thermal Plastics, UL 94V-0 , LCP , Black
- 2.Contact: Brass
- 3.Shell: Brass

Finish:

- 1.Contact: Plated Gold in Mating Area;
Tin on Solder Balls
Nickel under plated overall
- 2.Shell: Nickel Plating

ITEM NO.	DESCRIPTION	DRAWN	DATE



TOLERANCE UNLESS OTHERWISE STATED :

Up to 5 ±0.2
Above 5 ~ 15 ±0.3
Above 15 ~ 30 ±0.4
Above 30 ~ 50 ±0.5
Angle ±0.3°

3RD. ANGEL'S



UNITS

MM

DRAWN BY:	DATE	MAT'L	TITLE	CONNECTOR
Jack Lu	05/14/13	FINISH	MODLE	1394 6PF R/A SMT
CHECKED BY:	DATE	SCALE	DWG NO.	SUC-1394H-6P-S175
Jacky Chen	05/14/13	SHEET NO.	PART NO.	SUC-1394H-6P-S175
APPROVED BY:	DATE	1 of 1		
Tony Kao	05/14/13			

SIZE
A4
VER
A0